

Meribel, 3 Valleys

ALPINE 
ELEMENTS



Meribel, 1550 - 3250m

Meribel (3 Valleys) largest ski area in Europe: 1500m to 3250m: 650Km's piste, Courchevel & Val Thorens all on same lift pass. The best kept slopes & most varied ski terrain in Europe. Very snow sure.

The heart of the 3 valleys, the pretty resort of Meribel

A lively chocolate box ski resort (chalet style) with the best ski terrain in Europe. Glacier up at Val Thorens and snow-sure skiing until May. Wide pistes, great snow, excellent for all abilities

Lifts/Slopes:

- > **Victoria** - to start and finish skiing - 5 min free bus (stops outside chalet)
- > **Jolie** - ski back to door (almost) but to start skiing: 10 min free bus (stops outside chalet)
- > **Meilleur** - ski back to door (almost) and to start skiing: 2 min walk to slopes/lifts (200m)
- > **Cretet** - ski back to within 200m of door; and to start skiing: 1 min walk to slopes

Lift passes

Book after initial reservation - we will send you details on how to book. Pre-book lift passes with us and they will be at the chalet for your arrival.

Selling Points

- Some of the best ski and board terrain in Europe - 650km, lots of variety
- Characteristic, wide pistes and very well kept snow
- Pretty resort, lots going on.
- Meribel is centre point in 3V and has immediate access to the wider 3 Valleys

Access to Courchevel & Val Thorens

Meribel is in the heart of the 3V, so access to the other valleys is very easy for all levels

Beginners & Kids

A huge network of easy green runs link up the whole the 3 Valleys, which allow beginners and kids to experience miles of terrain and good snow at altitude without being confined to nurseries. The Altiport is best for beginners and the Chaudanne is where all ski schools meet; and where the free bus goes to, for all our chalets.

Intermediates

Very good for intermediates: lots of blues & reds and wide pistes for carving. Inter's can ski and board all over the 3 valleys

Advanced

THE largest resort in Europe, now linked to a new area (for 2021/22) to make it even larger. Lots of off piste itineraries for inter's and expert. Lots of easy and challenging powder, blacks and red runs. Great wide piste for carving.

The ski terrain

- > Good for all levels beginner to expert
- > Wide, well-kept pistes, world class skiing and boarding
- > Very snow sure resort with Val Thorens and its glacier so easy to get to from Meribel
- > Fast lift system, so short wait-time in queues and less slope congestion = MORE Skiing!

Night life:

So may great bars and late night pubs

Shops/restaurants/cafes:

Lots of good ski shops, gift shops, restaurants, cafés and lively bars. Also La Folie Douce!

Non skiing / to do: Snow shoe walking paths all over resort and stunning scenery. Some of the most pleasant for walking in France! Snow biking (studded tyres), leisure complex (pool, wellness), husky rides, parapente, skidoo rental, bowling, cinema.

Chalet Jolie

Great chalet for large groups, hot tub & sauna, almost ski-to-door

[Chalet Jolie Movie](#)

Rooms: Sleeps 21 in 10 bedrooms all en-suite, (3 twin, 4 dbl, 1 quad, 1 twin & single interconnecting)

Facilities: Sauna, hot tub, Wi-Fi, Boot warmers/dryers, free parking outside chalet

Alpine Elements Service:

- Bubbly reception on arrival; breakfast: continental each day with cooked items (3 mornings); afternoon tea 6 days, 3 course dinners & wine for 6 days. Two staff days off: split over three mornings (where breakfast is continental self-serve) and one afternoon (where dinner is not provided).
- Chalet public areas cleaned 6 days a week, bedrooms deep cleaned on changeover day with one midweek clean of ensuite bathroom only, on request.

Distances & Buses:

- **Ski Slopes, lifts:**
Ski back to within 300m of chalet, to start skiing it's a 10 min ride to Méribel centre on the free resort bus which stops outside the chalet.
- **Shops/Bars/Centre:**
In Méribel Mussyllon, 3-4 mins' walk from the popular apres ski bar, O'Sullivan's 10 min walk from Méribel centre (free bus takes 2 mins)
- **Buses:**
The bus stops outside chalet (within 50m) and runs every 30 minutes' or so (during most periods) right up until 11.30/midnight.



The Knowledge

- 3 mins walk from O'Sullivan's bar & club
- 10 mins walk to Meribel central areas (shops, bars etc)
- 5 min free bus ride to Chaudanne ski slopes

Check-in-out:

- > Arrival day: After 3pm
- > Departure day: 9am

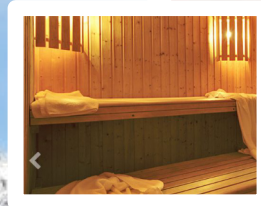
Self Drive & Parking

9 hours from Calais. Parking is free and most guests will find spaces outside/close to chalet.

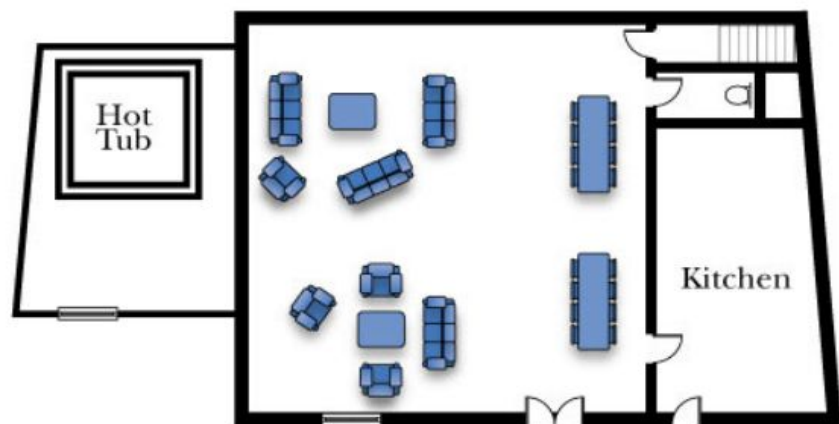
Transfers:

Alpine Elements complimentary transfer (Geneva) to your chalet each Sunday (Geneva to Meribel) 2hr 11min by car - source Google, (coach may take longer)

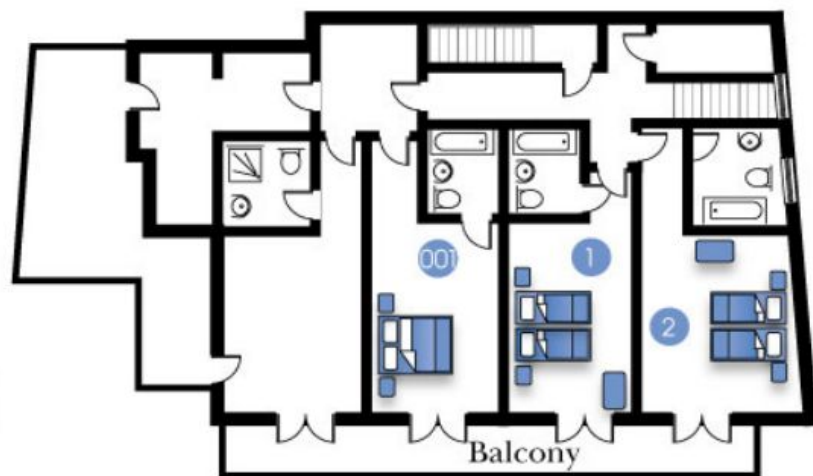
[Read more on Free Transfers & times](#)



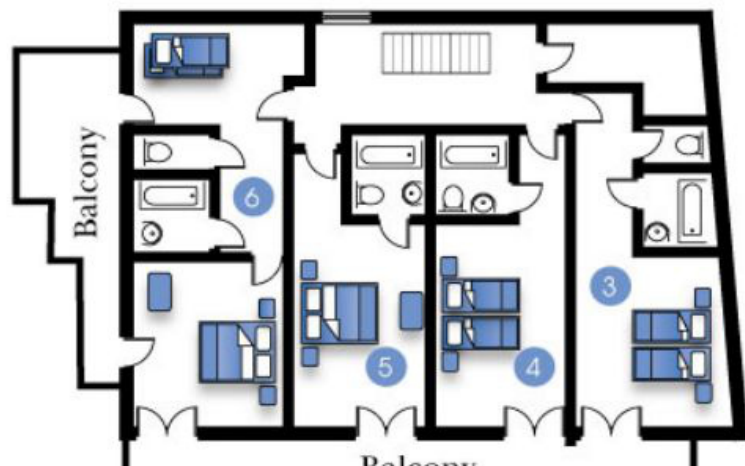
Ground Floor



First Floor



Second Floor



Third Floor

