

Tignes Les Brevieres



**CHALETS JOSEPHINE
& NAPOLEON**

**ELEVATOR
SKI LIFT**

Tignes Les Brevieres

Most snow sure resort in Europe: 1600m to 3550m: 325Km's of piste, PLUS 100's kms of 'useable off-piste' on top (as it snows so much). Snow lasts until May (Summer skiing is also possible)

The original 'Old Town' of Tignes:

A traditional & pretty looking resort, chalet-style buildings with high altitude skiing on the doorstep. None of the high-rise concrete buildings of Tignes - yet still connected to the best, most snow sure slopes of Tignes and Val d'Isère

Lifts/Slopes:

Ski Elevator Lift: 100m from chalet, runs all day & night when you press the button

Lift passes

Book after initial reservation - we will send you details on how to book. Lift passes at the chalet for your arrival.

Selling Points (Les Brevieres)

- Chalet-style pretty resort. None of the high-rise concrete buildings of Tignes - yet still connected to the best, most snow sure slopes
- Immediate access to some of the best skiing and boarding in the area - no queues and less people. Very good on a powder day!
- Brev' is the only place in Tignes with trees - so you can see in bad weather! This is a major PLUS. Tignes & Val can be a bit miserable in bad weather so trees are GOOD!

Skiing from Brev' to Le Lac:

Just 1 gondola and 1 chairlift ride takes you to the Pallafour (tourist office) in the centre of Tignes le Lac. Skiable for beginners.

Skiing, boarding levels

> **Beginner:** Easy green runs lead back to resort. It is less 'stressy' for beginners as slopes are quieter. Beginners not confined to lower slopes. There are green runs from top of gondola! ski school meeting points in Brevieres

> **Intermediate:** Very good for intermediates: lots of blues & reds.

> **Advanced:** The Sache is a very famous runs that leads into Brev'. Great in powder. Lots of red and black runs leading into Brev'. Brev' is quieter on a powder day, where you have great off piste on red graded runs leading from the top of the gondola

The ski terrain

> Good for all levels beginner to expert

> Brev' is the only place in Tignes with trees - so you can see in bad weather! This is a major PLUS

> Wide, well-kept pistes, world class skiing and boarding

> Most snow sure resort in Europe (two glaciers). Season is from November to May.

There is even summer skiing on the glacier

> Fast lift system, so short wait-time in queues and less slope congestion = MORE Skiing!

Night life:

4 or 5 apres ski bars and one late night club in Brev'. For more nightlife taxi up to le Lac or free bus runs until 11.30

Shops/restaurants/cafes:

A few ski shops and gift shops, lovely restaurants & café

Non skiing / to do: (Up in Tignes) access on foot via Breviere gondola and a Navette from Les Boisses: Glacier walking (via funicular railway), Lagoon leisure complex (pool, wellness), husky rides, parapente, snow tubing, skidoo rental, bowling, cinema.

Chalet Josephine & Napoleon

10 bed chalet, hot tub, ski slope & lake views, 100m from ski lift

[Chalet Josephine & Napoleon Movie](#)

Rooms: Sleeps 10 in 5 bedrooms (all en-suite)

Facilities: Outdoor Hot Tub, Wi-Fi, parking nearby is free outside or covered parking 50m from chalet (paid for)

Alpine Elements Service:

- Bubbly reception on arrival; breakfast: continental each day with cooked items (3 mornings); afternoon tea 6 days, 3 course dinners & wine for 6 days. Two staff days off: split over three mornings (where breakfast is continental self-serve) and one afternoon (where dinner is not provided).
- Chalet public areas cleaned 6 days a week, bedrooms deep cleaned on changeover day with one midweek clean of ensuite bathroom only, on request.

Distances & Buses:

- **Ski Elevator Lift:**
150 metres from chalet. Runs on demand and connects you to the resort centre, slopes, lifts & ski schools
- **Shops/bars/Centre:**
Approx 450m or a 5-6 min' walk downhill. But normally you' take the elevator lift
- **Buses:**
No buses required. But for pedestrian access to Le Lac - take the Brev' gondola to Les Boisses 1800, (where there are more bars), and take the free bus. Gondola & bus runs until 22.30



The Knowledge

- Can be opened up with Napoleon to make a 20 bed chalet
- Normally sold as a private 10 bed chalet -completely separate
- Ski elevator lift to centre & slopes — 100m away

Check-in-out:

- > Arrival day: After 3pm
- > Departure day: 9am

Self Drive & Parking

9 hours from Calais. Parking is free. You should find spaces outside/close to chalet or use the covered car park (50m away) fee paid locally

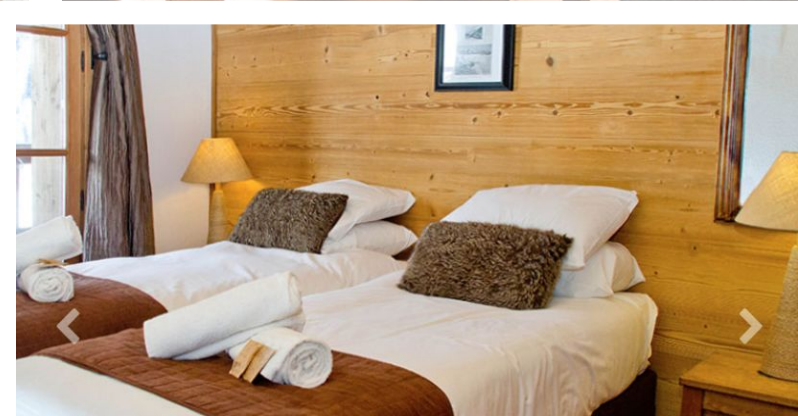
Transfers:

Alpine Elements complimentary transfer (Geneva) to the door of chalet each Sunday (Geneva to Brev') 2hr 38min by car - source Google, (coach may take longer)

[Read more on Free Transfers & times](#)



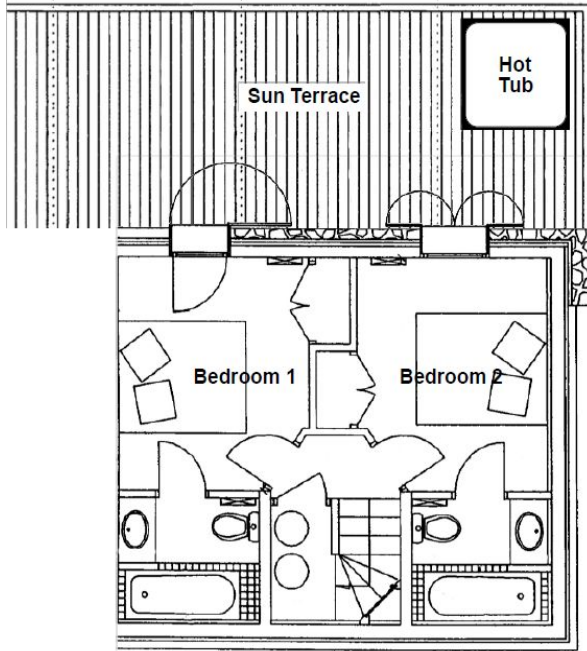
Chalets Josephine & Napoleon



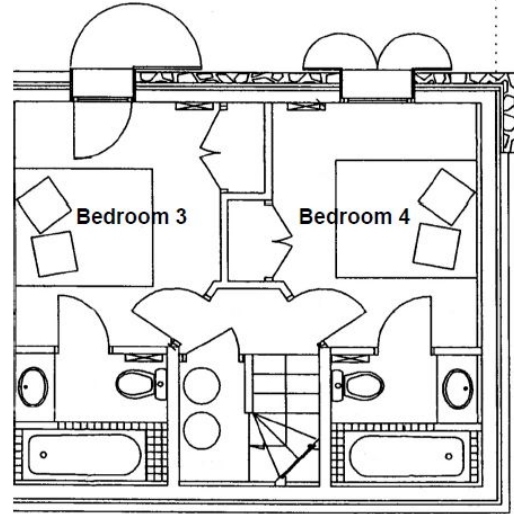
Chalets Josephine
& Napoleon
Almost identical chalets

Chalet Josephine

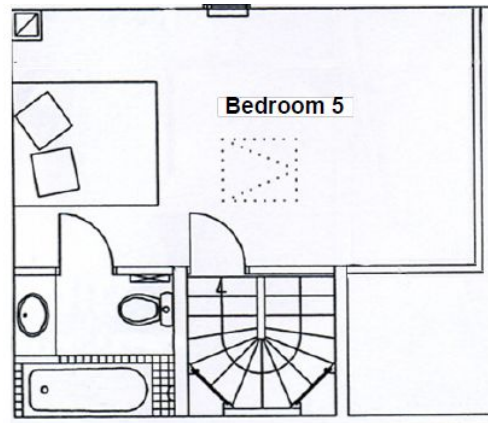
Ground floor



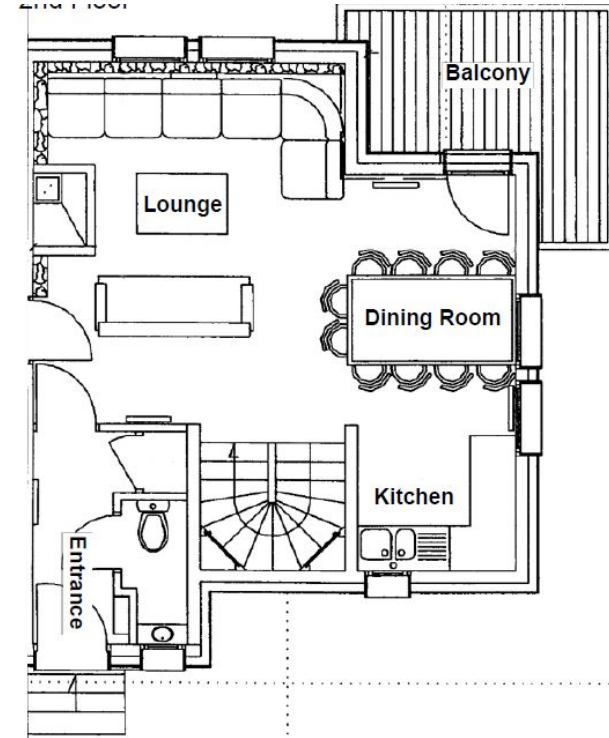
First floor



Top floor



Second floor



Chalet Napoleon is an almost identical chalet & layout, but top floor room 5 is a larger room, almost twice the size of room 5 in Josephine