

Morzine, Portes du Soleil

iGO SKI **ALPINE ELEMENTS**



Morzine, 1000 - 2650m

Morzine is in the heart of the Portes du Soleil, one of the largest ski areas in Europe. It has 650Km's + of piste (!) and spans 12 ski villages across Switzerland and France which is all available on the same lift pass.

In the heart of the Portes du Soleil, a ski village with style

This buzzing mountain town is chalet-style and pretty to look at, with no concrete high rise buildings and only 1 hour from Geneva - so it makes a popular weekend ski destination too

Lifts/Slopes:

- > **Chalet Nyon** - almost ski to door! Very rare for Morzine. Just 50m to Nyon gondola lifts
- > **Chalet Austin** - 5-10 mins on free bus (stops outside chalet) to Pleney slopes & lifts
- > **Chalet Well** - 5-10 mins on free bus (stops outside chalet) to Pleney slopes & lifts
- > **Chalet Delphine** - 5 mins walk to popular Super Morzine bubble lifts
- > **Chalet Telebenne** - 5 mins walk to popular Super Morzine bubble lifts
- > **Hotel Hermine** - 5 mins walk to popular Super Morzine bubble lifts
- > **Hotel Philibert** - 5-10 mins on free bus (stops outside chalet) to Super Morzine lifts; or 8-10 mins by bus in the other direction to Prodains lifts & slopes at the bottom of Avoriaz.

Lift passes

Book after initial reservation - we will send you details on how to book. Pre-book lift passes with us and they will be at the chalet for your arrival.

Selling Points

- Some of the most varied ski and board terrain in Europe - 650km, lots of variety
- Most northern resort in France, so gets lots of snowfall above 1200m
- Morzine village is at 1000m, but all skiing is above 1400m and is snowsure due to northerly location

Access to the best skiing and boarding

Morzine is in the middle so you have equal access to the Morzine and Les Gets sector or the Avoriaz and Swiss sector. So staying in Morzine gives you the best access to all areas

Beginners & Kids

Very popular with families with excellent ski schools (many are British schools) and very good creche and ski gardens for first time skiers (age 3-6). On Pleney side, lots of high altitude beginner slopes (remain in good snow) with networks of easy runs all over, spanning into Les Gets. Terrain is gentle & allows beginners to explore further afield.

Intermediates

Very good for intermediates: lots of blues & reds and miles of terrain to explore - spanning 12 stations and Switzerland! You won't be bored skiing or snowboarding here!

Advanced

One of the largest resorts in Europe (on a par with 3 Valleys). Lots of easy and challenging powder, blacks and red runs. Great for carving.

The ski terrain

- > Good for all levels beginner to expert
- > Wide, well-kept pistes, world class skiing and boarding
- > Very snow sure resort with Val Thorens and its glacier so easy to get to from Meribel
- > Fast lift system, so short wait-time in queues and less slope congestion = MORE Skiing!

Night life:

So may great bars and late night pubs

Shops/restaurants/cafes:

Lots of good ski shops, gift shops, restaurants, cafés and lively bars. Also La Folie Douce!

Non skiing / to do: Snow shoe walking paths all over resort and stunning scenery. Some of the most pleasant for walking in France! Snow biking (studded tyres), leisure complex (pool, wellness), husky rides, parapente, skidoo rental, bowling, cinema.

Chalet Delphine

Hot tub, sauna and 5 mins to lifts

Rooms: Sleeps 12 in 6 bedrooms all Twin/Dbl en-suite,

Facilities: Hot tub, Sauna, Wi-Fi, Boot warmers/dryers, free parking outside chalet

Alpine Elements Service:

- Bubbly reception on arrival; breakfast: continental each day with cooked items (3 mornings); afternoon tea 6 days, 3 course dinners & wine for 6 days. Two staff days off: split over three mornings (where breakfast is continental self-serve) and one afternoon (where dinner is not provided).
- Chalet public areas cleaned 6 days a week, bedrooms deep cleaned on changeover day with one midweek clean of ensuite bathroom only, on request.

Distances & Buses:

- **Ski slopes:** It's only about a 5 minute walk to the main Super Morzine ski lifts where you can directly access Avoriaz and the wider area incl Switzerland.
- **Pleney Ski Slopes:** 8-10 mins walk to Le Pleney slopes and lifts.
- **Shops/Bars/Centre:**
5 mins walk to the shops and bars
- **Buses:**
No need for buses!



The Knowledge

- Just 5 mins to shops and bars
- 5 mins to the Super Morzine lifts
- Hot tub, sauna

Check-in-out:

> Arrival day: After 3pm

> Departure day: 9am

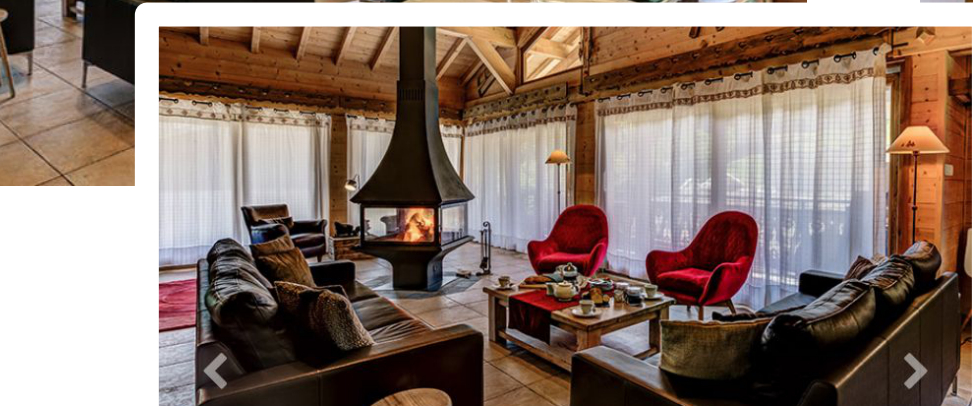
Self Drive & Parking

9 hours from Calais. Parking is free for up to 3 or 4 cars in chalet grounds

Transfers:

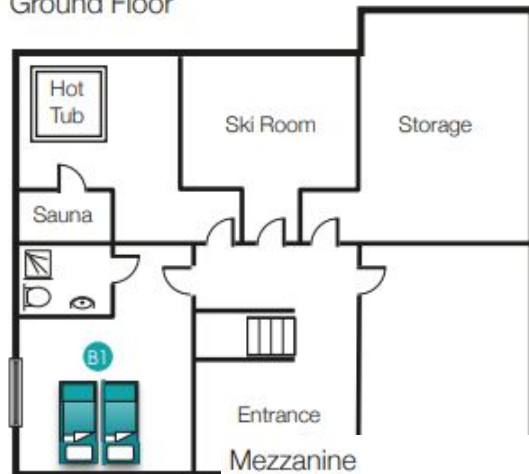
Alpine Elements complimentary transfer (Geneva) to your chalet each Sunday (Geneva to Morzine) 1hr 10min by car - source Google, (coach may take longer)

[Read more on Free Transfers & times](#)

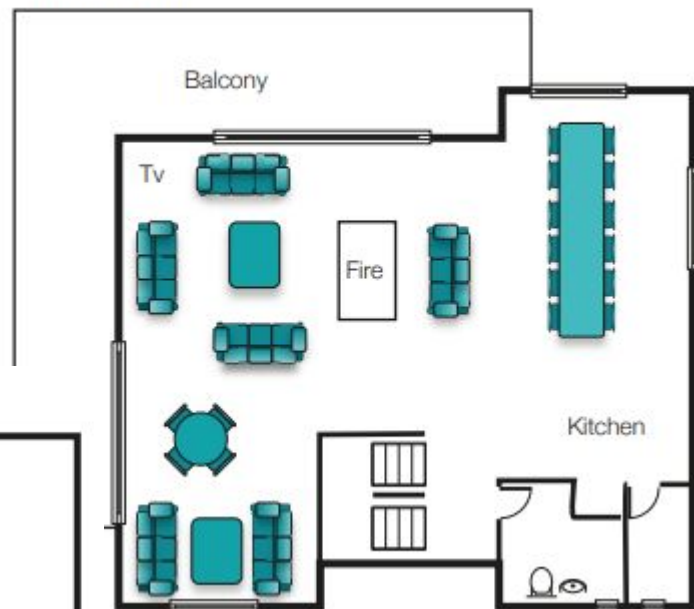


Chalet Delphine

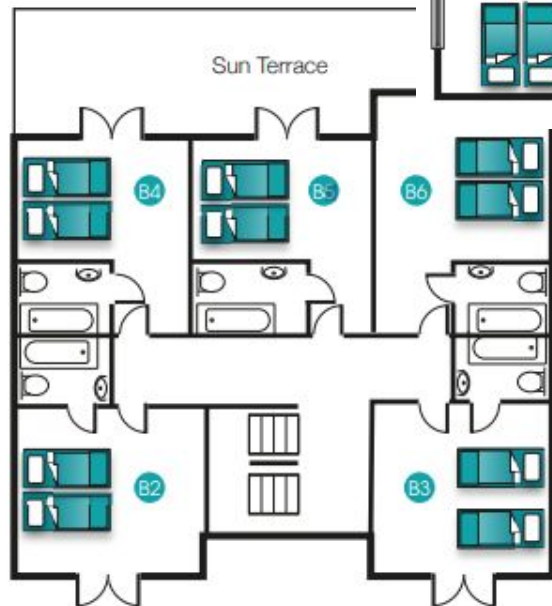
Ground Floor



Second Floor



Sun Terrace



Kids Play/TV Area

