

Meribel, 3 Valleys

ALPINE 
ELEMENTS



Meribel, 1550 - 3250m

Meribel (3 Valleys) largest ski area in Europe: 1500m to 3250m: 650Km's piste, Courchevel & Val Thorens all on same lift pass. The best kept slopes & most varied ski terrain in Europe. Very snow sure.

The heart of the 3 valleys, the pretty resort of Meribel

A lively chocolate box ski resort (chalet style) with the best ski terrain in Europe. Glacier up at Val Thorens and snow-sure skiing until May. Wide pistes, great snow, excellent for all abilities

Lifts/Slopes:

- > **Victoria** - to start and finish skiing - 5 min free bus (stops outside chalet)
- > **Jolie** - ski back to door (almost) but to start skiing: 10 min free bus (stops outside chalet)
- > **Meilleur** - ski back to door (almost) and to start skiing: 2 min walk to slopes/lifts (200m)
- > **Cretet** - ski back to within 200m of door; and to start skiing: 1 min walk to slopes

Lift passes

Book after initial reservation - we will send you details on how to book. Pre-book lift passes with us and they will be at the chalet for your arrival.

Selling Points

- Some of the best ski and board terrain in Europe - 650km, lots of variety
- Characteristic, wide pistes and very well kept snow
- Pretty resort, lots going on.
- Meribel is centre point in 3V and has immediate access to the wider 3 Valleys

Access to Courchevel & Val Thorens

Meribel is in the heart of the 3V, so access to the other valleys is very easy for all levels

Beginners & Kids

A huge network of easy green runs link up the whole the 3 Valleys, which allow beginners and kids to experience miles of terrain and good snow at altitude without being confined to nurseries. The Altiport is best for beginners and the Chaudanne is where all ski schools meet; and where the free bus goes to, for all our chalets.

Intermediates

Very good for intermediates: lots of blues & reds and wide pistes for carving. Inter's can ski and board all over the 3 valleys

Advanced

THE largest resort in Europe, now linked to a new area (for 2021/22) to make it even larger. Lots of off piste itineraries for inter's and expert. Lots of easy and challenging powder, blacks and red runs. Great wide piste for carving.

The ski terrain

- > Good for all levels beginner to expert
- > Wide, well-kept pistes, world class skiing and boarding
- > Very snow sure resort with Val Thorens and its glacier so easy to get to from Meribel
- > Fast lift system, so short wait-time in queues and less slope congestion = MORE Skiing!

Night life:

So may great bars and late night pubs

Shops/restaurants/cafes:

Lots of good ski shops, gift shops, restaurants, cafés and lively bars. Also La Folie Douce!

Non skiing / to do: Snow shoe walking paths all over resort and stunning scenery. Some of the most pleasant for walking in France! Snow biking (studded tyres), leisure complex (pool, wellness), husky rides, parapente, skidoo rental, bowling, cinema.

Chalet Cretet

Hot tub, Sauna. Just a 1-2 min walk to the slopes

[Chalet Cretet Movie](#)

Rooms: Sleeps 10 in 5 bedrooms all en-suite, (5 twin/dbl)

Facilities: Hot tub, Sauna, Boot warmers/dryers

Alpine Elements Service:

- Bubbly reception on arrival; breakfast: continental each day with cooked items (3 mornings); afternoon tea 6 days, 3 course dinners & wine for 6 days. Two staff days off: split over three mornings (where breakfast is continental self-serve) and one afternoon (where dinner is not provided).
- Chalet public areas cleaned 6 days a week, bedrooms deep cleaned on changeover day with one midweek clean of ensuite bathroom only, on request.

Distances & Buses:

- **Ski Slopes, lifts:**
Good skiers can ski back to the chalet (via a powder run) and all skiers can use the slopes 200 metres away, where there is an easy Green leading straight to Chaudanne for ski lessons and onward connections. Mottaret gives you direct access to Mont Vallon & Val Thorens and avoids the queues at La Chaudanne. A great skiing location!
- **Shops/Bars/Centre:**
Mottaret bars, shops and cafes - approx 300 metres (3-5 mins walk) from door
- **Buses:**
No need for buses, everything is close to hand. For pedestrian access to ski school at Chaudanne or Meribel centre, (for shopping), the free bus stops 200m from chalet.



The Knowledge

- 1-2 mins walk to the slopes
- Hot tub, sauna, beautifully renovated luxury ski chalet!
- Route One access to the best of the 3 Valleys

Check-in-out:

- > Arrival day: After 3pm
- > Departure day: 9am

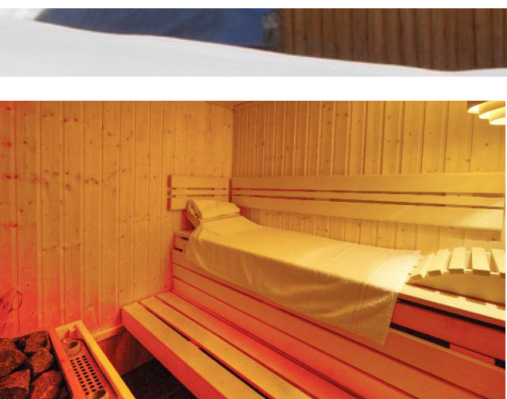
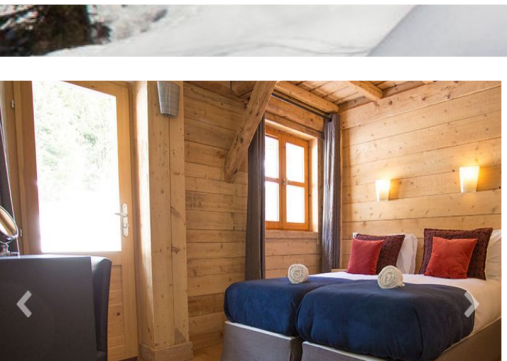
Self Drive & Parking

9 hours from Calais. Parking is free for 4+ cars in chalet grounds

Transfers:

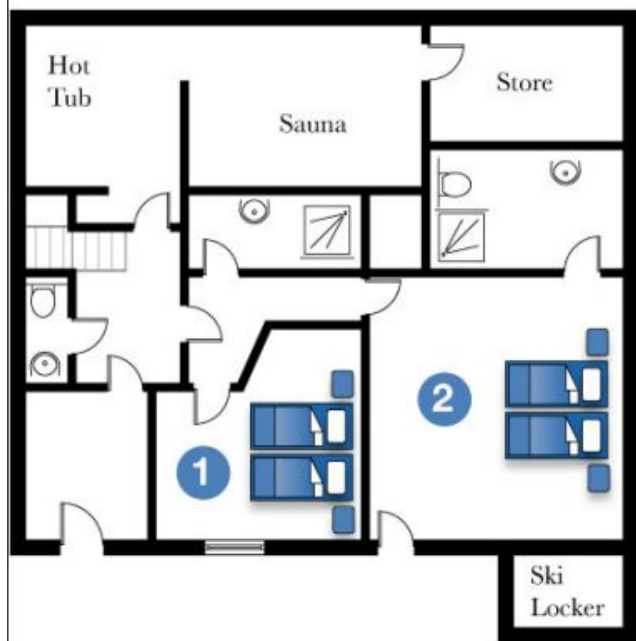
Alpine Elements complimentary transfer (Geneva) to your chalet each Sunday (Geneva to Meribel) 2hr 11min by car - source Google, (coach may take longer)

[Read more on Free Transfers & times](#)

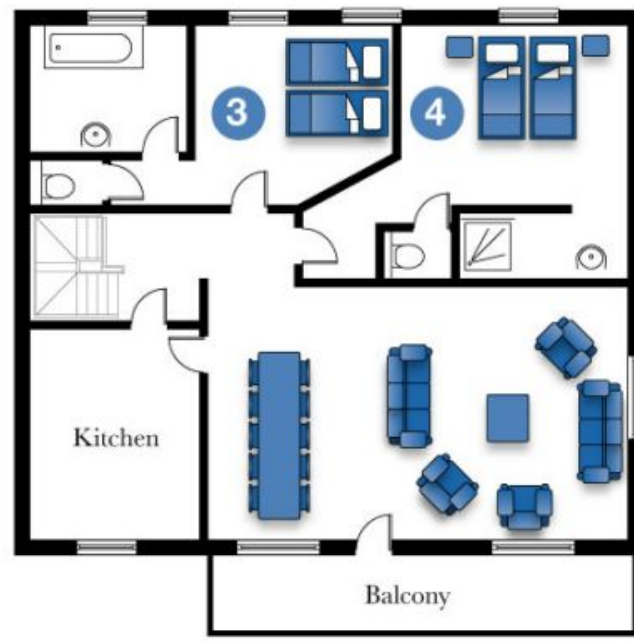


Chalet Cretet

Ground Floor



First Floor



Top Floor

