

Plagne Villages 2020m



NURSERY SLOPE

OUR CHALETs



SHOPS & BARS

CHALET JOLY
& ELEGANT

CHALET CHARMANT

CHALET
PANORAMIQUE

La Plagne Villages (2020m to 3250m)

Linked to Les Arcs, (Paradiski), 4th largest ski area in France: 425 Km's of piste, PLUS 100's kms of excellent 'off-piste'. Great snow quality and a very long season.

Quaint, less busy, direct access to best slopes

Smaller and much prettier than Plagne Centre with good selection of ski shops, cafes & bars just 100m from our chalets. There's a central 'front de neiges' (snow front) with ski school and some of the best slopes and powder descents on our doorstep. See pic right

Lifts/Slopes:

You can ski back to within a few metres of the chalets. To start skiing: walk 50 metres or pole your way to the slopes which are less than 100m away. Join the piste and head down to the Bergerie or Melezes chairlift

The Telebus ski lift (50-100m from chalet) takes you directly to Plagne Centre and runs until midnight for more bars, shops, clubs and alternative ski schools

Lift passes

Book after initial reservation - we will send you details on how to book. Pre-book lift passes with us and they will be at the chalet for your arrival.

Selling Points

- Ski to the door of all our chalets: slopes go past the front door!
- Direct access to the best slopes in Paradiski & great powder descents all around
- Snow quality is exceptionally good up here (2020m)
- Quieter, so no queues and stress free skiing for beginners and family



Skiing, boarding levels

- > **Beginner:** Easy green runs all over the local area. Plagne Village is quiet, less stressy and has great nurseries. Perfect for kids and learning
- > **Intermediate:** Very good for intermediates: lots of blues, reds & tame powder descents.
- > **Advanced:** Heaps of terrain & off-piste. Great in powder. Lots of red / black runs and some of the longest descents in France. Paradiski lift pass covers Les Arcs, Vallandry etc

The ski terrain

- > Good for all levels beginner to expert
- > Wide, well-kept pistes, excellent snow quality, very snow sure (2 glaciers). Long season
- > Fast lift system, so short wait-time in queues and less slope congestion = MORE Skiing!

Shops, bars, cafes

A few good ski shops and gift shops, lovely restaurants & cafés (slopeside) 7 or 8 bars and late night pubs. For more nightlife Telebus lift (to midnight) to Plagne Centre.

Non skiing / to do: Lots of shops in Plagne Centre (easy to get to via Telebus lift near chalet) Husky & sled rides, parapente, snow mtn biking, skidos, snow-shoe walking paths

Chalet Charmant

Sauna, panoramic ski slope views, 50m from ski lift
Shops, bars and central area 'front de neiges' just 100m from chalet

Rooms: Sleeps 10 in 5 bedrooms all en-suite, (3 twin/dbl & 2 twin/triple)

Facilities: Sauna, Wi-Fi, Boot warmers/dryers, free parking near chalet or covered parking (paid for)

Alpine Elements Service:

- Bubbly reception on arrival; breakfast: continental each day with cooked items (3 mornings); afternoon tea 6 days, 3 course dinners & wine for 6 days. Two staff days off: split over three mornings (where breakfast is continental self-serve) and one afternoon (where dinner is not provided).
- Chalet public areas cleaned 6 days a week, bedrooms deep cleaned on changeover day with one midweek clean of ensuite bathroom only, on request.

Distances & Buses:

- **Ski slopes:** Ski to the door. To start skiing: walk 50 metres or pole your way to the slopes which are less than 100m away. Join the piste and ski down to the chairlifts.
- **Ski Lifts / Slopes**
50 to 100 metres from chalet.
- **Shops/Bars/Centre:**
100 metres from chalets
- **Buses:** No buses required, can get Telebus lift to La Plagne centre for wider choice (runs til' midnight)



Highlights

Panoramic views from balcony

- Ski to door chalet, sauna, boot warmers
- Shops, bars just 100m away
- Ski lifts just 50m away

Check-in-out:

> Arrival day: After 3pm

> Departure day: 9am

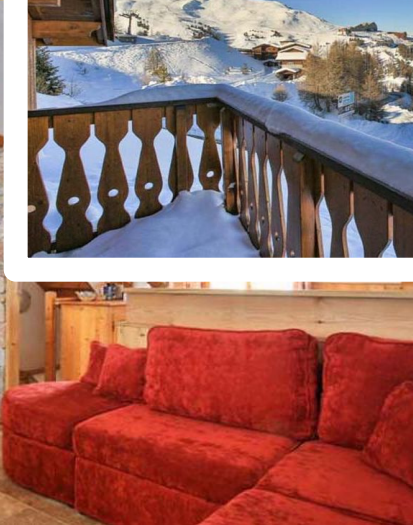
Self Drive & Parking

9 hours from Calais. Parking is free and most guests will find spaces outside/close to chalet or use the undercover car park (200m away) fee paid locally

Transfers:

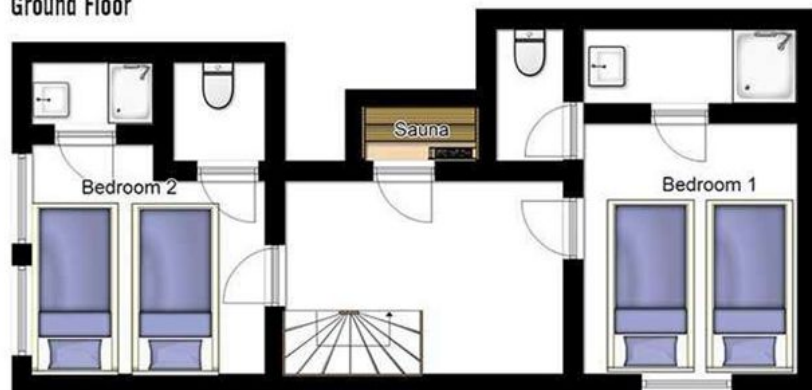
Alpine Elements complimentary transfer (Geneva) to the door of chalet each Sunday (Geneva to Plagne Village) 2hr 30min by car - source Google, (coach may take longer)

[Read more on Free Transfers & times](#)

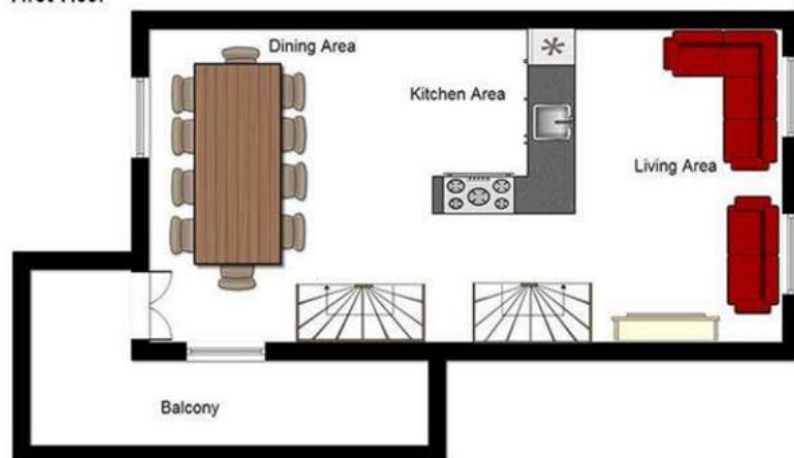


Chalet Charmant

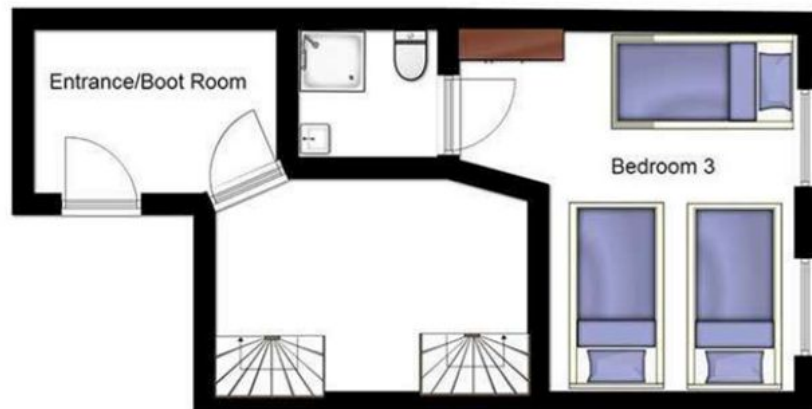
Ground Floor



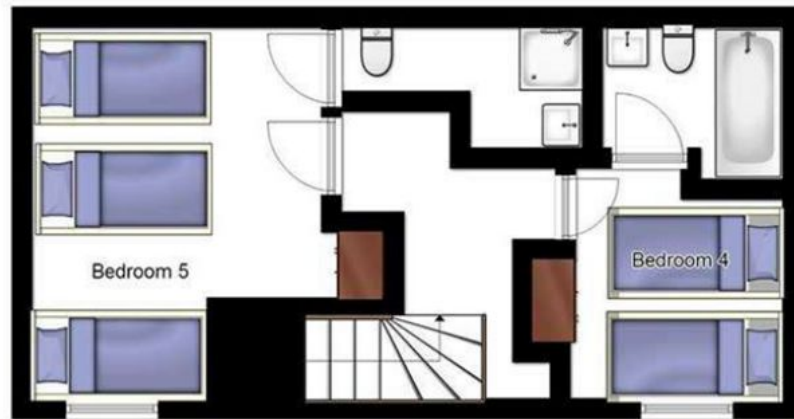
First Floor



Entrance Floor



Second Floor



La Plagne 1800 - 3226

